

Anti-IL2 Receptor Gamma Antibody
Catalog # ABO10930**Specification****Anti-IL2 Receptor Gamma Antibody - Product Information**

Application	WB
Primary Accession	P31785
Host	Rabbit
Reactivity	Human
Clonality	Polyclonal
Format	Lyophilized

Description

Rabbit IgG polyclonal antibody for Cytokine receptor common subunit gamma(IL2RG) detection. Tested with WB in Human.

Reconstitution

Add 0.2ml of distilled water will yield a concentration of 500ug/ml.

Anti-IL2 Receptor Gamma Antibody - Additional Information

Gene ID 3561

Other Names

Cytokine receptor common subunit gamma, Interleukin-2 receptor subunit gamma, IL-2 receptor subunit gamma, IL-2R subunit gamma, IL-2RG, gammaC, p64, CD132, IL2RG

Calculated MW

42287 MW KDa

Application Details

Western blot, 0.1-0.5 µg/ml, Human

Subcellular Localization

Membrane; Single-pass type I membrane protein.

Protein Name

Cytokine receptor common subunit gamma

Contents

Each vial contains 5mg BSA, 0.9mg NaCl, 0.2mg Na₂HPO₄, 0.05mg Thimerosal, 0.05mg NaN₃.

Immunogen

A synthetic peptide corresponding to a sequence in the middle region of human IL2 Receptor gamma(88-102aa HYWYKNSDNDKVQKC).

Purification

Immunogen affinity purified.

Cross Reactivity

No cross reactivity with other proteins

Storage

At -20°C for one year. After r°Constitution, at 4°C for one month. It°Can also be aliquotted and stored frozen at -20°C for a longer time.Avoid repeated freezing and thawing.

Sequence Similarities

Belongs to the type I cytokine receptor family. Type 5 subfamily.

Anti-IL2 Receptor Gamma Antibody - Protein Information

Name IL2RG

Function

Common subunit for the receptors for a variety of interleukins. Probably in association with IL15RA, involved in the stimulation of neutrophil phagocytosis by IL15 (PubMed:15123770).

Cellular Location

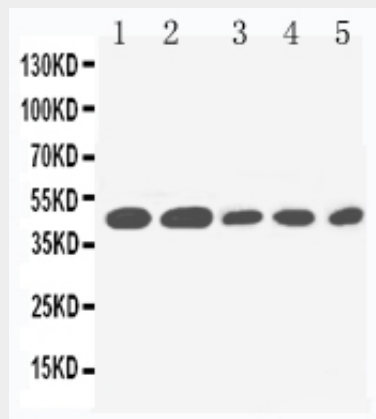
Cell membrane; Single-pass type I membrane protein. Cell surface

Anti-IL2 Receptor Gamma Antibody - Protocols

Provided below are standard protocols that you may find useful for product applications.

- [Western Blot](#)
- [Blocking Peptides](#)
- [Dot Blot](#)
- [Immunohistochemistry](#)
- [Immunofluorescence](#)
- [Immunoprecipitation](#)
- [Flow Cytometry](#)
- [Cell Culture](#)

Anti-IL2 Receptor Gamma Antibody - Images



Anti-IL2 Receptor gamma antibody, ABO10930, Western blotting Lane 1: PANC Cell Lysate Lane 2:

HELA Cell Lysate Lane 3: JURKAT Cell Lysate Lane 4: RAJI Cell Lysate Lane 5: CEM Cell Lysate

Anti-IL2 Receptor Gamma Antibody - Background

IL2RG (INTERLEUKIN 2 RECEPTOR, GAMMA), also known as Common gamma chain or CD132, is a cytokine receptor sub-unit that is common to the receptor complexes for at least six different interleukin receptors: IL-2, IL-4, IL-7, IL-9, IL-15 and interleukin-21 receptor. IL2RG is a member of the type I cytokine receptor family expressed on most lymphocyte (white blood cell) populations, and its gene is found on the X-chromosome of mammals. By fluorescence in situ hybridization and PCR amplification of somatic cell hybrid DNAs, the IL2RG gene is mapped to Xq13.1. The IL2RG gene contains 8 exons and spans approximately 4.2 kb. And the gamma chain is an indispensable component of the functional IL2 receptor. Lymphocytes expressing the common gamma chain can form functional receptors for these cytokine proteins, which transmit signals from one cell to another and direct programs of cellular differentiation. The sharing of the gamma subunit by several receptors explains why humans and mice that lack IL2 entirely show milder symptoms than those with IL2RG deficiency.